

The
BARBADOS
PLAN C

TWO-STORY

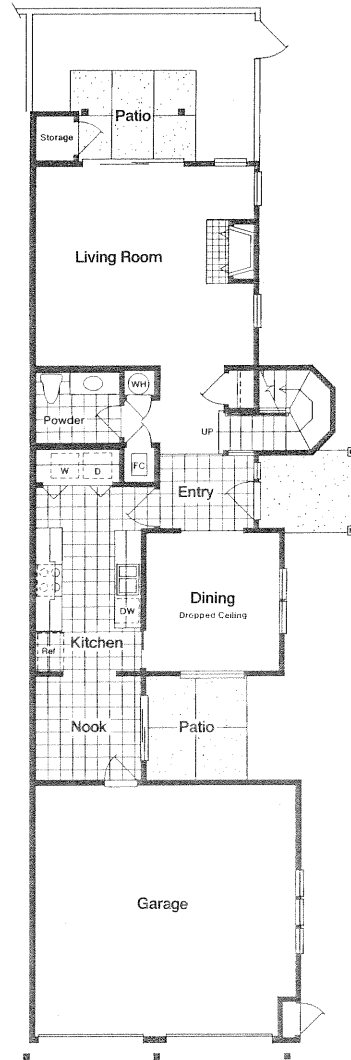
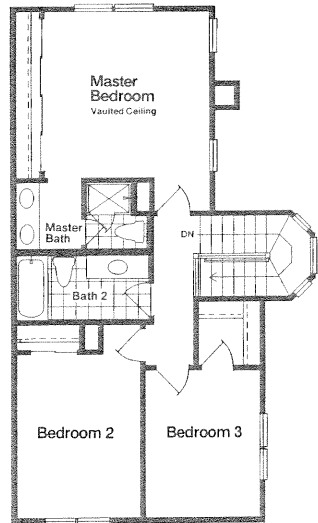
THREE BEDROOMS

TWO AND ONE-HALF BATHS

APPROXIMATELY 1,680 SQUARE FEET

TWO-CAR ATTACHED GARAGE

The elegant Barbados. This well-designed home is the ultimate for those people who welcome any reason to receive guests. A trellised patio is the focal point of the handsome living room, while a formal dining room, charming breakfast nook and large kitchen with pantry complete the first level. A luxurious master bedroom and two functional secondary bedrooms occupy the second level. A



The
ANTIGUA
PLAN C-1

TRI-LEVEL

THREE BEDROOMS

THREE AND ONE-HALF BATHS

APPROXIMATELY 2,270 SQUARE FEET

TWO-CAR ATTACHED GARAGE

The traditional, eclectic Antigua. Ideal for the family, this appealing home offers exciting indoor-outdoor living on three levels. For convenience, the lower level is directly accessible through the two-car garage. The large family room and patio are perfect for children, while the mid-level's comfortable living room and formal dining room provide an excellent place in which to entertain guests. The bedroom level is thoughtfully removed from the traffic flow below. Of special note—the master bedroom and bath suite open onto a deck with splendid privacy.

