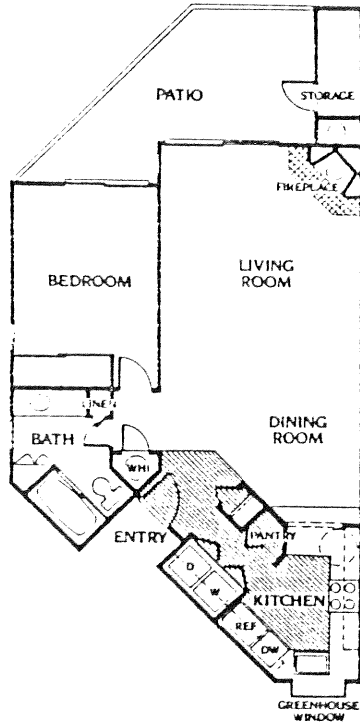




## Plan A

1 Bedroom, 1 Bath

This inviting and comfortable plan features a private patio that may be accessed from the bedroom or living room. The living and dining rooms are adjoined, providing ample space for entertaining. Special touches in the kitchen include hardwood flooring and a beautiful greenhouse window.



## Plan B

1 Bedroom, 1 Bath

This winning plan combines beauty and practicality. Solarium windows create a light, airy feeling and the two private patios are ideal for leisure and outdoor dining. The spacious kitchen which adjoins the formal dining room allows for easy entertaining.

