

2015 SHORES SALES 2015

BOARDWALK

| | | |
|-----------|-------|-----------|
| Boardwalk | 3/2.5 | \$926,000 |
| Boardwalk | 3/2.5 | \$900,000 |
| Portwalk | 3/2.5 | \$885,000 |
| Portwalk | 2/2.5 | \$838,888 |
| Boardwalk | 2/2.5 | \$760,000 |
| Portwalk | 2/2 | \$640,000 |
| Portwalk | 2/2 | \$628,000 |
| Portwalk | 2/2 | \$626,000 |
| Boadwalk | 2/2 | \$620,000 |
| Portwalk | 2/1 | \$525,000 |
| Portwalk | 2/1 | \$525,000 |

FARALLON

| | | |
|-----------------|-------|-------------|
| Treasure Island | 3/2.5 | \$1,005,000 |
| Treasure Island | 3/2.5 | \$983,000 |
| Farallon | 2/2.5 | \$952,000 |

HAMPTON

| | | |
|-------|-------|-----------|
| Shoal | 2/2.5 | \$780,000 |
| Shoal | 1/2 | \$680,000 |
| Shoal | 1/2 | \$680,000 |

HASTINGS

| | | |
|----------------|-----|-----------|
| Hastings Shore | 3/3 | \$825,000 |
| Hastings Shore | 3/3 | \$750,000 |
| Hastings Shore | 2/2 | \$702,000 |
| Hastings Shore | 2/2 | \$665,000 |
| Hastings Shore | 2/2 | \$660,000 |
| Hastings Shore | 2/2 | \$635,000 |
| Hastings Shore | 2/2 | \$632,500 |
| Hastings Shore | 1/1 | \$485,000 |
| Hastings Shore | 1/1 | \$455,000 |

LAKE SHORE

| | | |
|---------------|-----|-------------|
| Mediterranean | 3/3 | \$1,250,000 |
| Mediterranean | 3/3 | \$1,260,000 |
| Lakeshore | 3/3 | \$1,150,000 |
| Mediterranean | 2/2 | \$1,150,000 |
| Mediterranean | 2/2 | \$1,050,000 |
| Mediterranean | 2/2 | \$1,045,000 |
| Mediterranean | 2/2 | \$1,035,000 |
| Mediterranean | 2/2 | \$900,000 |
| Lakeshore | 2/2 | \$869,000 |



LIGHTHOUSE COVE

| | | |
|---------------|-------|-----------|
| Cape Hatteras | 2/2 | \$915,000 |
| Eddystone | 2/2.5 | \$866,000 |
| Cape Hatteras | 2/2.5 | \$820,000 |
| Eddystone | 2/2 | \$800,000 |
| Eddystone | 3/2 | \$750,000 |
| Barnegat | 2/1 | \$642,000 |
| Cape Hatteras | 2/1 | \$610,000 |
| Cape Hatteras | 2/1 | \$610,000 |
| Barnegat | 1/1 | \$500,000 |

MANORS

| | | |
|-----------|-------|-----------|
| Mendocino | 2/2.5 | \$929,000 |
| Mendocino | 2/2.5 | \$710,000 |
| Mendocino | 2/2.5 | \$670,000 |

SEABRIDGE

| | | |
|-----------|-------|-------------|
| Spinnaker | 2/2 | \$1,329,000 |
| Spinnaker | 3/2.5 | \$1,295,000 |
| Marlin | 2/2.5 | \$1,205,680 |
| Admiralty | 3/2.5 | \$1,180,000 |
| Marlin | 2/2.5 | \$1,180,000 |
| Spinnaker | 2/2.5 | \$1,062,500 |
| Marlin | 3/2.5 | \$1,150,000 |
| Marlin | 3/2.5 | \$1,131,000 |
| Spinnaker | 2/2.5 | \$988,000 |

SEACREST

| | | |
|----------|-------|-----------|
| Positano | 3/2.5 | \$960,000 |
| Livorno | 3/2.5 | \$900,000 |
| Positano | 3/2.5 | \$900,000 |
| Positano | 2/2 | \$800,000 |

THE COVE

| | | |
|-----------|-------|-----------|
| Genoa | 3/2.5 | \$920,000 |
| Genoa | 3/2.5 | \$919,900 |
| Buccaneer | 3/2.5 | \$865,000 |
| Meridian | 2/2.5 | \$790,000 |
| Genoa | 2/2.5 | \$780,000 |
| Meridian | 2/2.5 | \$740,000 |
| Pilot | 2/2.5 | \$745,000 |

THE PRESERVE

| | | |
|-----------|-------|-------------|
| Hartstene | 4/3.5 | \$1,200,000 |
| Brewerton | 3/2.5 | \$1,120,000 |
| Keech | 3/2.5 | \$1,100,000 |
| Waldron | 2/2.5 | \$965,000 |
| Hartstene | 2/2.5 | \$929,000 |

PELICAN COVE

| | | |
|---------|-----|-----------|
| Cove | 2/2 | \$855,000 |
| Cove | 2/2 | \$750,000 |
| Pelican | 2/2 | \$705,000 |
| Cove | 2/2 | \$691,000 |
| Cove | 2/2 | \$689,000 |
| Pelican | 2/1 | \$655,000 |
| Cove | 2/1 | \$615,000 |
| Pelican | 2/1 | \$567,000 |
| Cove | 1/1 | \$515,000 |
| Pelican | 1/1 | \$550,000 |
| Pelican | 1/1 | \$440,000 |

PENINSULA LANDING

| | | |
|--------------|--------|-----------|
| Cork Harbour | 3/2 | \$745,000 |
| Cork Harbour | 2/2 | \$738,000 |
| Cork Harbour | 2/2 | \$720,000 |
| Cork Harbour | 3/2 | \$720,000 |
| Cork Harbour | 2/2 | \$655,000 |
| Cork Harbour | 2/2 | \$641,500 |
| Cork Harbour | 2/2 | \$635,000 |
| Cork Harbour | 2/2 | \$631,000 |
| Cork Harbour | 2/2 | \$628,500 |
| Cork Harbour | 1/1 | \$460,250 |
| Cork Harbour | 1/1 ss | \$440,000 |

REGATTA

| | | |
|---------------|-------|-----------|
| Constellation | 2/2.5 | \$925,000 |
| Intrepid | 2/2 | \$830,000 |

SHOREBIRD SOLAR & MARINA PORT

| | | | |
|-----|-----------|-------|-----------|
| 3/2 | \$950,000 | 2/2.5 | \$745,000 |
| 3/2 | \$902,000 | 2/2.5 | \$736,500 |
| 3/2 | \$850,000 | 2/2 | \$720,000 |
| 3/2 | \$850,000 | 2/2 | \$716,000 |
| 2/2 | \$810,000 | 2/2 | \$658,000 |
| 2/2 | \$788,000 | 1/1 | \$512,500 |
| 2/2 | \$765,000 | 1/1 | \$509,000 |
| 2/2 | \$760,000 | 1/1 | \$499,000 |
| | | 1/1 | \$495,000 |

VENTANA

| | |
|-------|-----------|
| 2/3 | \$966,000 |
| 2/3 | \$950,000 |
| 2/3 | \$910,000 |
| 2/2 | \$910,000 |
| 3/2.5 | \$900,000 |
| 3/2.5 | \$850,000 |
| 2/2.5 | \$830,000 |
| 2/2 | \$810,000 |
| 2/2.5 | \$740,000 |
| 1/1.5 | \$635,000 |

CONDOS & TOWNHOMES

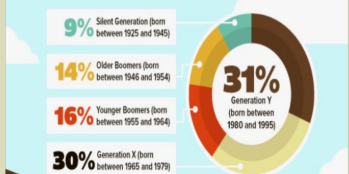


Data from Public Record/ RE Infolink



GEN Y IS READY TO BUY

Although Millennials face multiple challenges, including tight credit, limited inventory, and high debt loads, this generation sees a home as a good investment, and comprises one-third of recent buyers.



SOURCE: 2014 NAR Home Buyer and Seller Generational Trends study

