

2013 REDWOOD SHORES HOME SALES 2013

BEACON SHORES

Newport	4/3	\$1,508,000
Newport	3/2.5	\$1,210,000
Newport	4/3	\$1,150,000
Newport	3/3	\$1,130,000
Commander	3/2.5	\$895,000
Sea Cliff	3/2.5	\$870,000
Starfish	2/2.5	\$845,000
Newport	2/2	\$750,000

GOSSAMER COVE

Rockport	4/3	\$1,510,000
Gossamer	4/2.5	\$1,355,000
Seasons	3/2.5	\$1,240,000
Gossamer	3/2.5	\$1,156,000

GOSSAMER HOLLOW

Tanager	4/2.5	\$1,270,000
---------	-------	-------------

GOSSAMER ISLE

No Sales in 2013

GOSSAMER VILLAGE

Treedust	4/2.5	\$1,325,000
Whisperwave	4/2.5	\$1,252,000
Whisperwave	4/2.5	\$1,130,000
Whisperwave	3/2.5	\$1,105,000
Rivermist	4/2.5	\$1,058,888
Windfield	4/2.5	\$1,050,000
Windlea	3/2.5	\$1,035,000



BRIDGEPORT

Cape Cod	4/3	\$1,398,900
Sea Chase	4/3	\$1,333,000
Southport	4/3	\$1,260,000
Schooner Bay	4/3	\$1,250,000
Schooner Bay	4/3	\$1,239,000
Bay Harbour	4/3	\$1,198,000



SINGLE FAMILY HOMES

Data from Public Record/ RE Infolink

GOVERNORS BAY

Governors Bay	5/3	\$1,635,000
Governors Bay	4/3	\$1,588,400

CALIFORNIA COTTAGES

Northampton	3/2.5	\$980,000
Clipper	3/2.5	\$935,000
Clipper	3/2.5	\$927,500
Clipper	3/2.5	\$902,000

HARBOR COLONY

Harbor Colony	5/3	\$1,680,000
Harbor Colony	5/3	\$1,597,500
Harbor Colony	5/3	\$1,565,000
Harbor Colony	5/3	\$1,515,000
Harbor Colony	4/3	\$995,000

HARBOR COURT

Nice	3/2.5	\$1,502,000
Monaco	4/2.5	\$1,470,000

LAGUNA POINTE

Corriente	4/3	\$1,853,000
Corriente	4/3	\$1,800,000
Corriente	4/3	\$1,660,000
Oceanside	3/2.5	\$1,280,000



THE SHORE

Mindanao	3/2.5	\$1,521,000
Saint Martin	4/2.5	\$1,079,000



SHOREBIRD ISLAND

Island	4/3.5	\$1,685,000
Island	3/2.5	\$1,600,000
Island	4/2.5	\$1,275,000
Island	3/3	\$1,250,321

SUNRISE

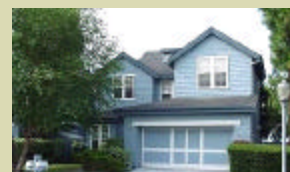
Riviera	3/2	\$1,038,000
Cadiz	3/2	\$952,000
Martinique	3/2.5	\$940,000
Riviera	2/2	\$905,000
Lido	2/2	\$880,000
Riviera	2/2	\$855,000
Lido	2/2	\$842,490

STRATFORD BAY

Breakwater	3/2.5	\$1,260,000
Jetty	4/2.5	\$1,215,000
Osprey	3/2.5	\$1,090,000

SANDPIPER LAGOON

Waterside	4/2.5	\$1,360,000
Waterside	4/3.5	\$1,199,000



ALL OTHER HOMES

Becket	4/3.5	\$2,000,000
Tiller	4/3	\$1,515,000
Keelson	3/2.5	\$1,300,000
Quay	4/3.5	\$1,205,000
Quay	3/3.5	\$1,176,000
Cringle	4/2	\$1,165,000
Dory	4/3	\$1,150,000
Capstan	4/2	\$1,150,000
Quay	3/2	\$1,135,000
Quay	3/2.5	\$1,228,000
Skiff	4/2	\$1,126,000
Compass	3/2	\$1,115,000
Quay	3/2.5	\$1,083,000
Compass	3/2	\$1,045,500
Compass	3/2	\$1,026,500
Bowsprit	3/2	\$1,006,000
Teredo	3/2	\$1,000,000
Skiff	4/3	\$930,000
Bark	2/2	\$822,425